

QUICKGUIDE



OUTDOOR



PLEASE NOTE: IT MAY BE THAT NOT ALL NEEDED TOOLS ARE LISTED HERE. LISTED TOOLS ARE ADD-ONS TO GENERAL TOOLS YOU SHOULD BRING TO THE JOBSITE. WE CONTINUE TO IMPROVE THE LIST.



- T Handle Allen Wrench Set and/or Hex Bits:
2.5mm; 3mm; 4mm; 5mm; 6mm; 8mm



- Torx/Star Set or Bits: T-10; T-15, T-20; T-25

- Screwdriver Set

- Ball-End Hex Bit Socket Set metric



- Hammer/Mallet

- Utility Knife

- Drill Bit Set for Metal: Metric/SEA

- Step Drill Bit



- Adjustable Wrench 2x



- Tap & Drill Bit: 8mm



- Level: short; long

- Measuring Tape: 8m/25ft

- Laser: Distance Measurer; Level 3-Plane



- Speed Square

- Hole Saw: 2-1/4"



- Voltage Tester

- Wire Stripper

- Right Angler Drill Adapter



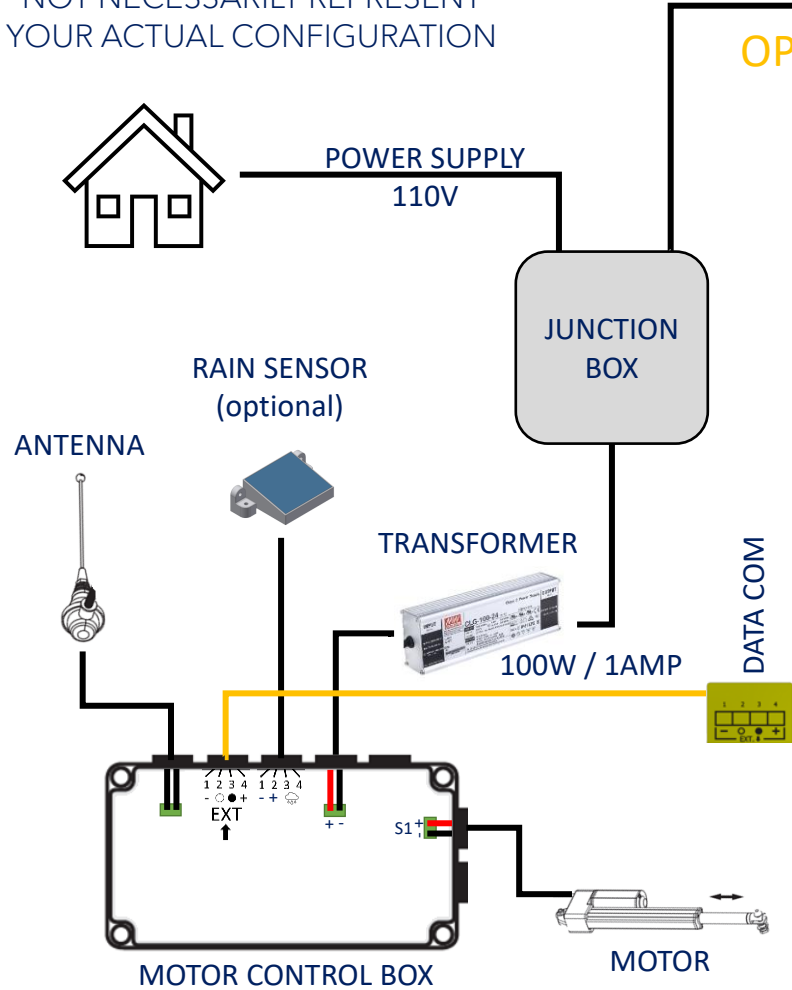
- Caulk Gun



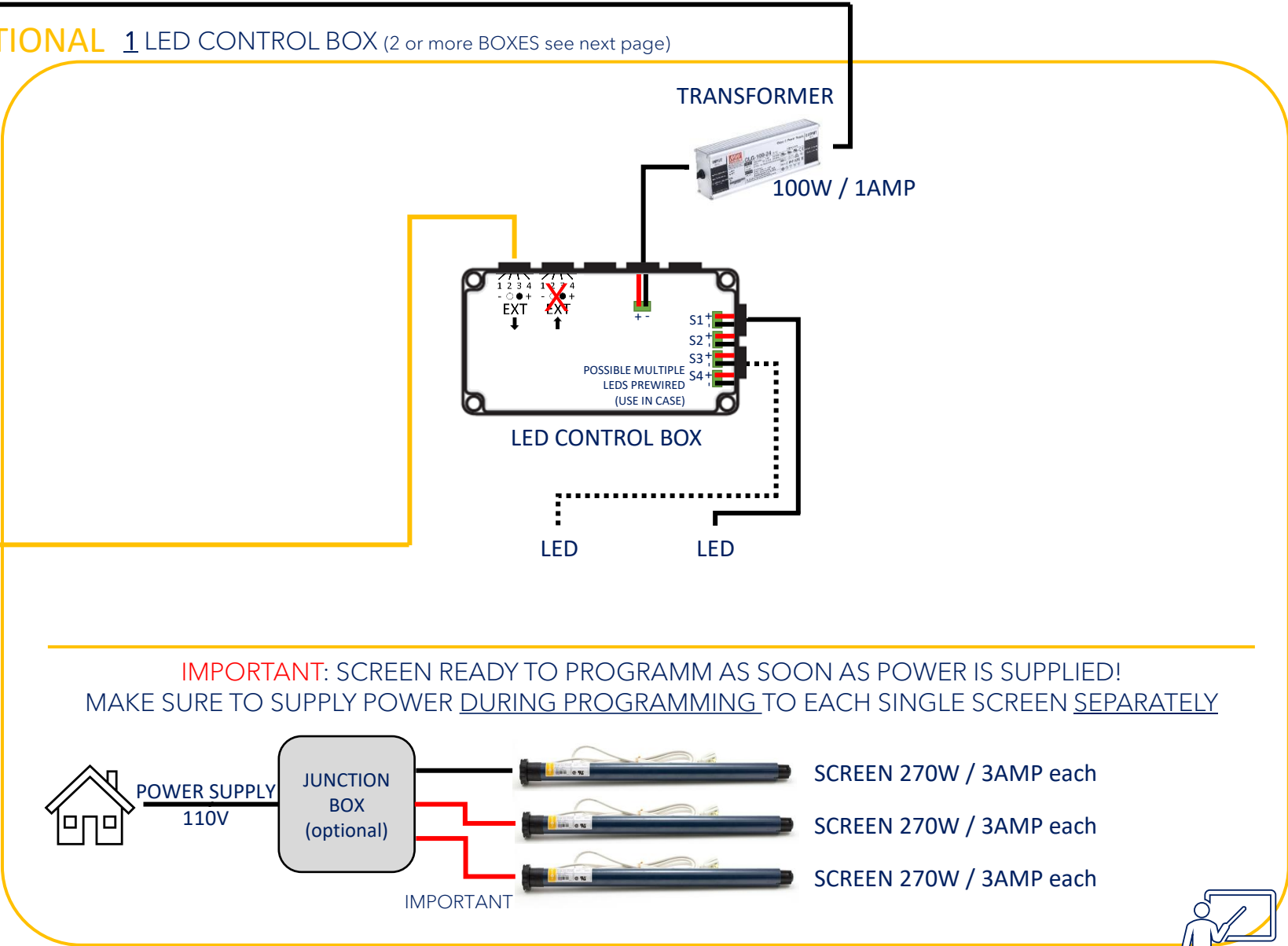
HELPFUL TOOLS



PLEASE NOTE: THIS IS A GENERIC
WIRING DIAGRAM WHICH DOES
NOT NECESSARILY REPRESENT
YOUR ACTUAL CONFIGURATION



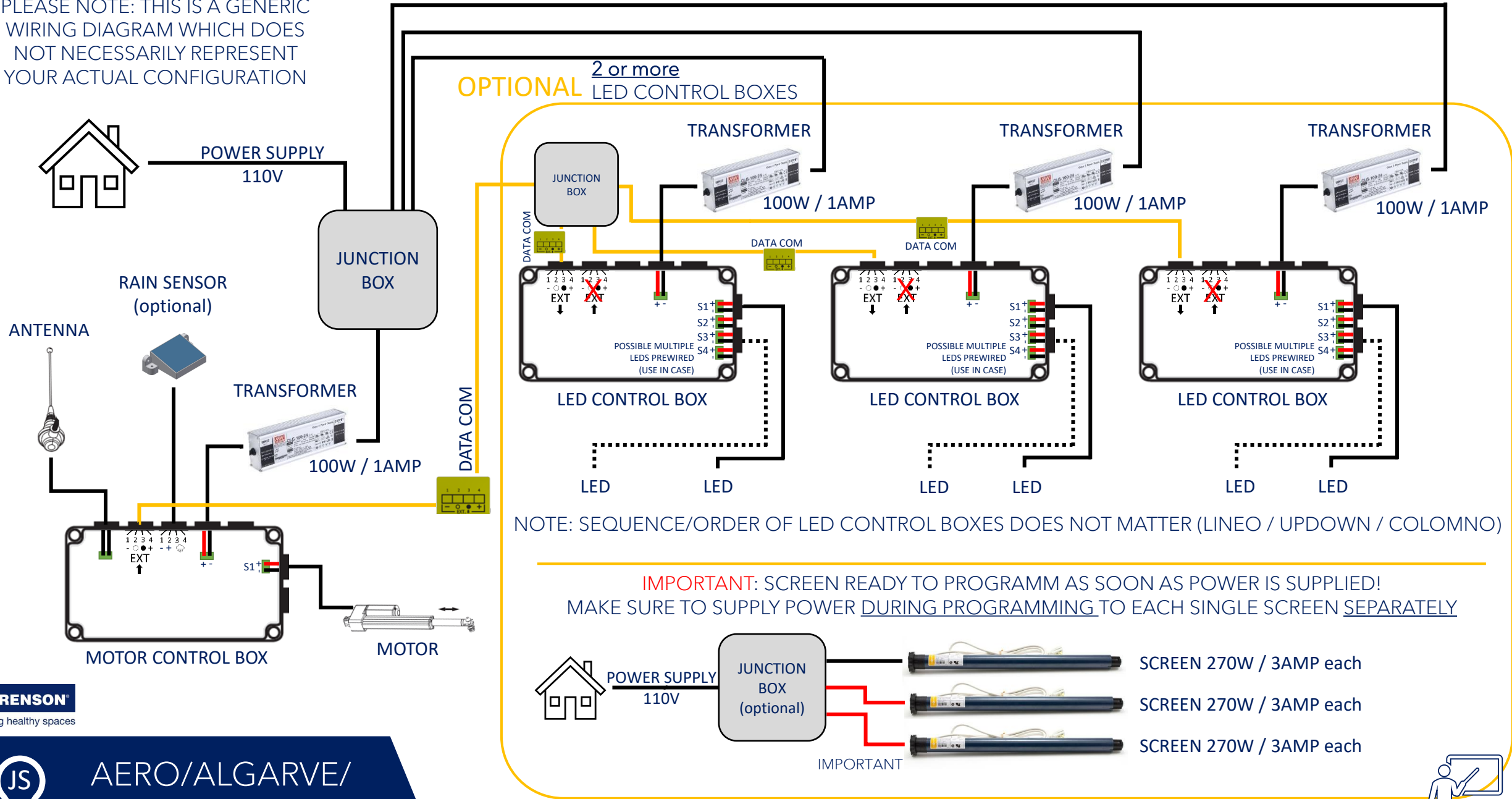
OPTIONAL 1 LED CONTROL BOX (2 or more BOXES see next page)



IMPORTANT: SCREEN READY TO PROGRAMM AS SOON AS POWER IS SUPPLIED!
MAKE SURE TO SUPPLY POWER DURING PROGRAMMING TO EACH SINGLE SCREEN SEPARATELY



PLEASE NOTE: THIS IS A GENERIC WIRING DIAGRAM WHICH DOES NOT NECESSARILY REPRESENT YOUR ACTUAL CONFIGURATION



Make sure the control box is powered

B Hold the PROG-button on the general control box longer than 2 seconds until lamp S1 blinks. The motor drive will make a short inward and outward movement, thus confirming it is working.

C Check if LED S1 is blinking. If not, press the PROG button briefly so S1 starts to blink.

D Choose the desired channel on the TELIS remote.

E Press (shortly) the UP and DOWN buttons on the remote simultaneously. The motor drive will make a short inward and outward movement, thus confirming it is working.

F Check the motor direction. The UP button is for opening the blades and DOWN closes them.

If the direction in point F is incorrect, reverse the direction by holding the MY button for more than 5 seconds.

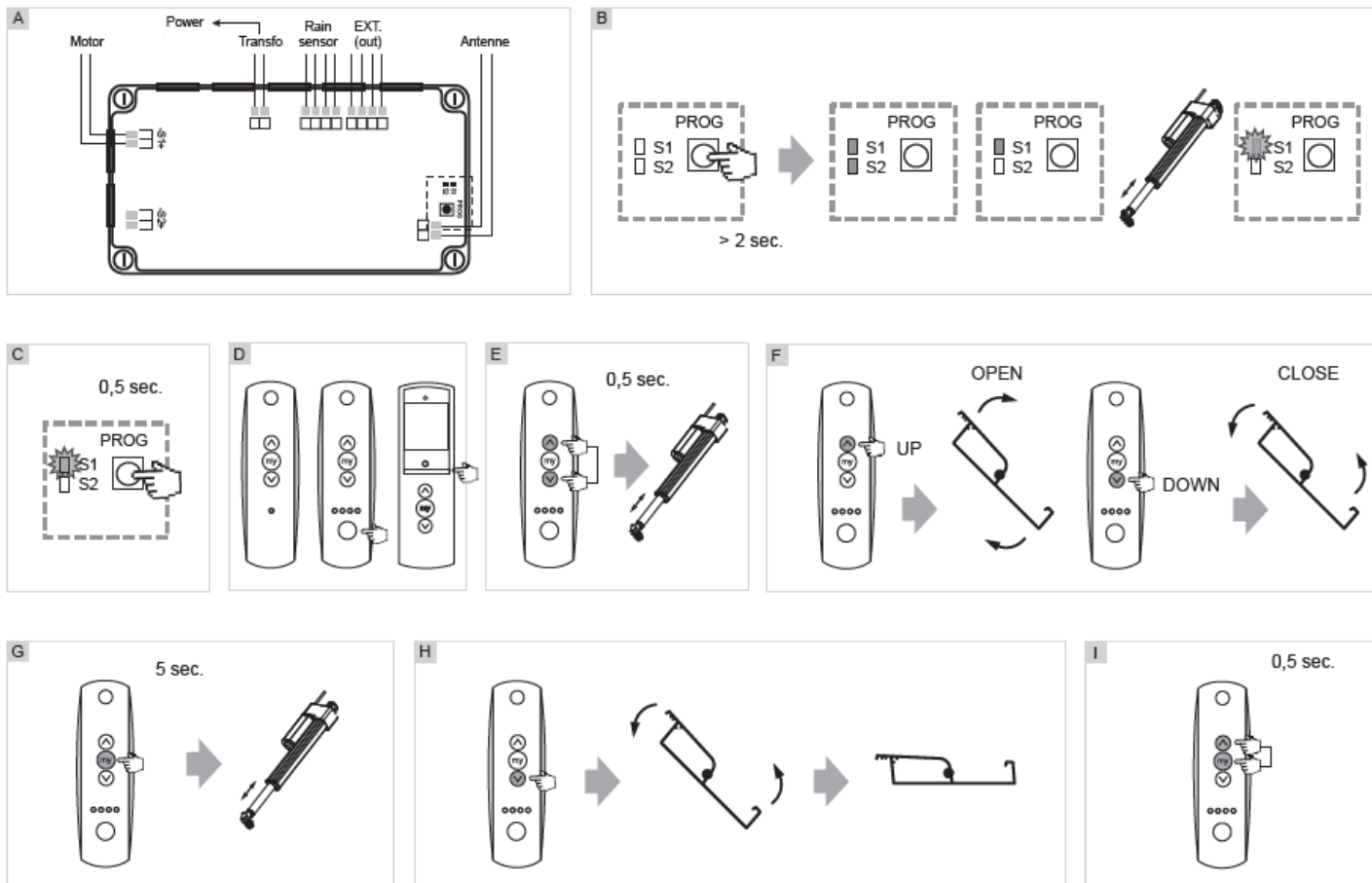
G The motor drive will make a short inward and outward movement, thus confirming it is working. Check the direction again of point F.

H Fully close the blades (keep pressing the DOWN button).

I Confirm the closed position by pressing (shortly) the UP and MY buttons simultaneously.

Remark: You can stop the blades from turning by pressing the MY button.

PROGRAMMING ROOF CONTROLS 1/2



PROGRAMMING ROOF



PROGRAMMING ROOF CONTROLS 2/2

A Open the blades completely.

B Confirm the open position by pressing (shortly) the DOWN and MY buttons simultaneously.

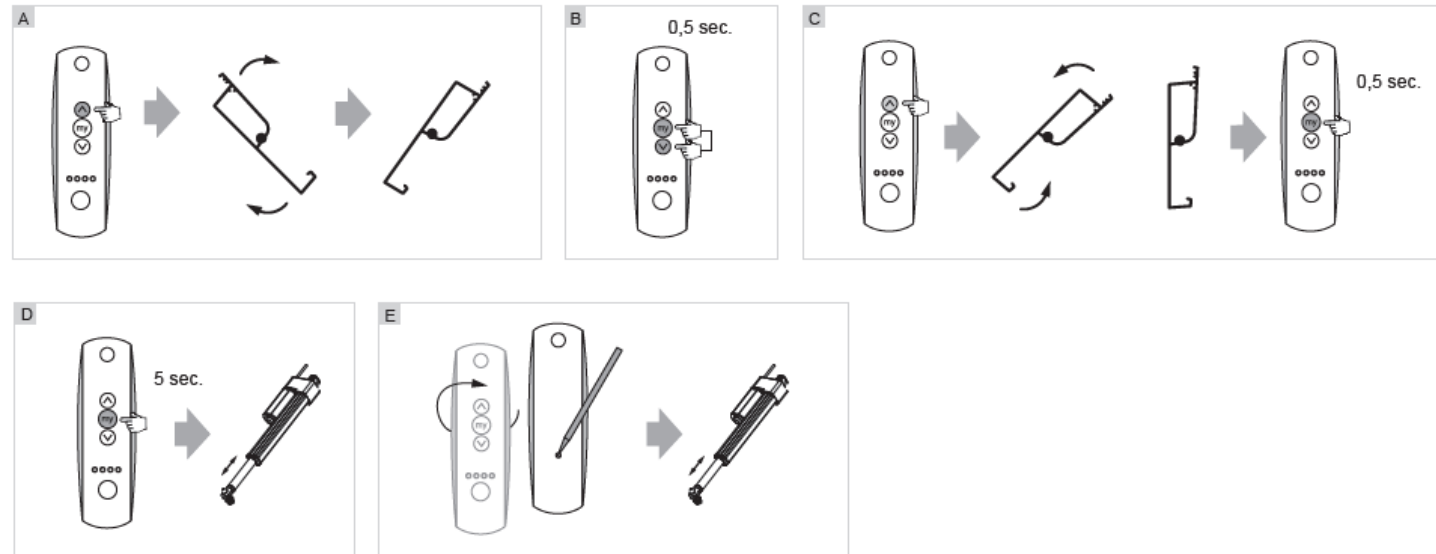
C Put the blades in the vertical position (snow position) using the UP or DOWN button. Press the MY button when the blades reach the vertical position (snow position).

D Confirm the snow position by holding the MY button for 5 seconds. The motor drive will make a short inward and outward movement as a confirmation it is working.

E Press the PROG button (shortly) on the back of the TELIS remote control until the drive makes a short in and out movement.

Now you can control the motor. Close the general control box. Fit the general control box and transformer back into the fixed blade.

Remark: You can stop the blades from turning by pressing the MY button.



Make sure to supply power (120V) only to the screen you are going to program, do not connect multiple screens during programming!
After supplying power, the screen enters program mode for about 10 minutes.

A Select the desired channel on the remote.

B Press the remote's UP and DOWN button simultaneously (briefly). The Screen will make a short movement.

C Check if direction is correct: UP button Screen goes UP - DOWN button Screen goes DOWN. If so, you can proceed to step E.

D If direction is reversed: Press MY button for more than 5 seconds. Screen will make a short up- and downward movement. Check that step C is now giving correct results.

E Press the UP button on the remote until you have reached the desired upper end limit.

F Press the MY and the DOWN buttons on the remote simultaneously (briefly) to confirm this upper end limit.

G The Screen rolls automatically down. Press (shortly) on the MY button of the remote as soon as you have reached the desired bottom lower end point. Note: You can still make some adjustments by pressing the UP or DOWN button.

H Press (shortly) the MY and the DOWN buttons on the remote simultaneously (shortly) to confirm this bottom end point. The Screen goes automatically back up.

I Press briefly on the MY button to stop the Screen movement at any point.

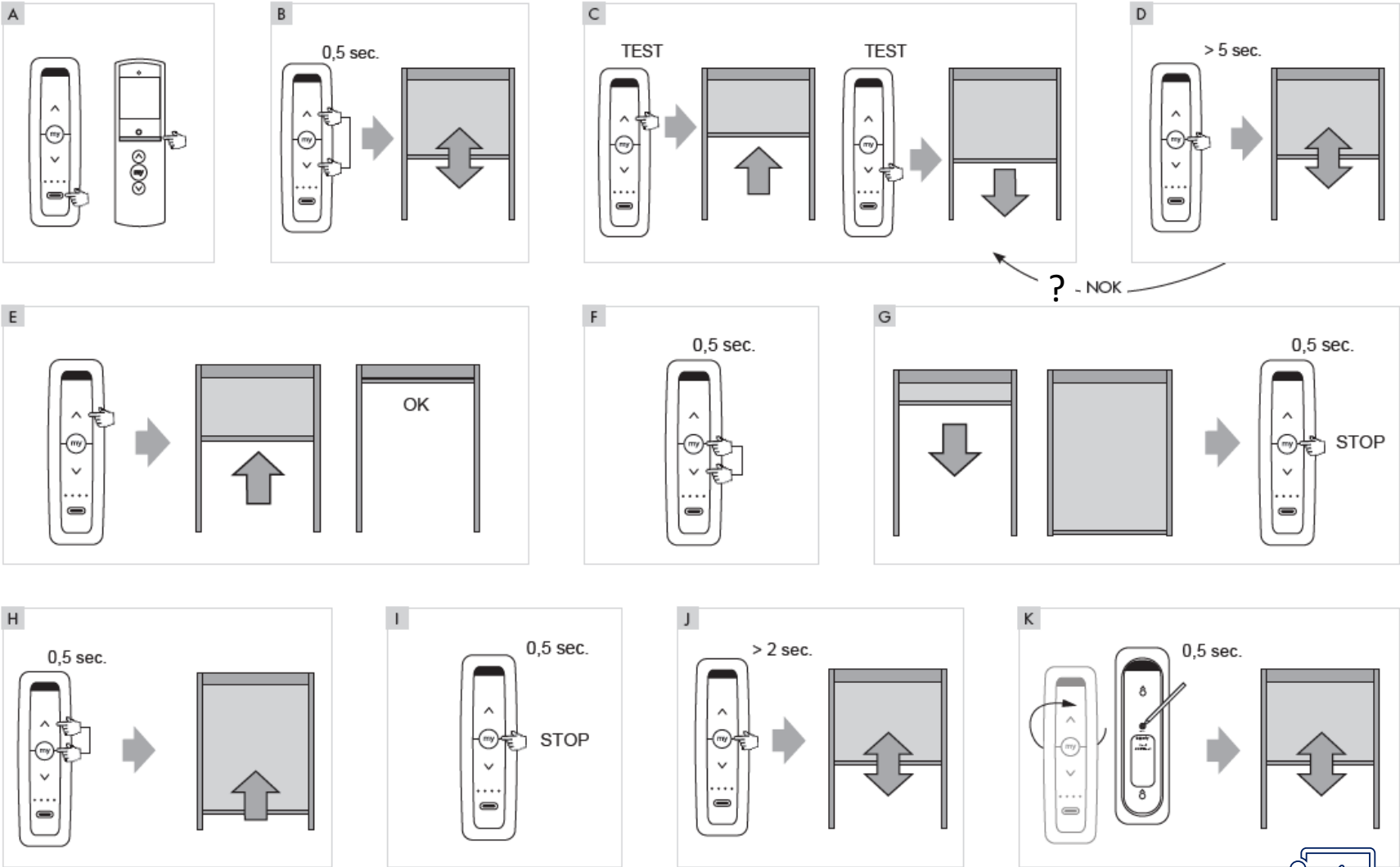
J Press and hold the MY button for more than 2 sec. until the Screen makes a short up- and downward movement.

K Press (briefly) the PROG button on the back of the remote. The Screen makes short an up- and downward movement. By doing this all settings are stored. Check the end points again.

PROGRAMMING SCREENS



IMPORTANT: EACH SCREEN MUST BE POWERED SEPARATELY DURING INSTALLATION/PROGRAMMING



PROGRAMMING SCREENS



CHANGE END LIMITS OF SCREENS

after programming is finished



Creating healthy spaces

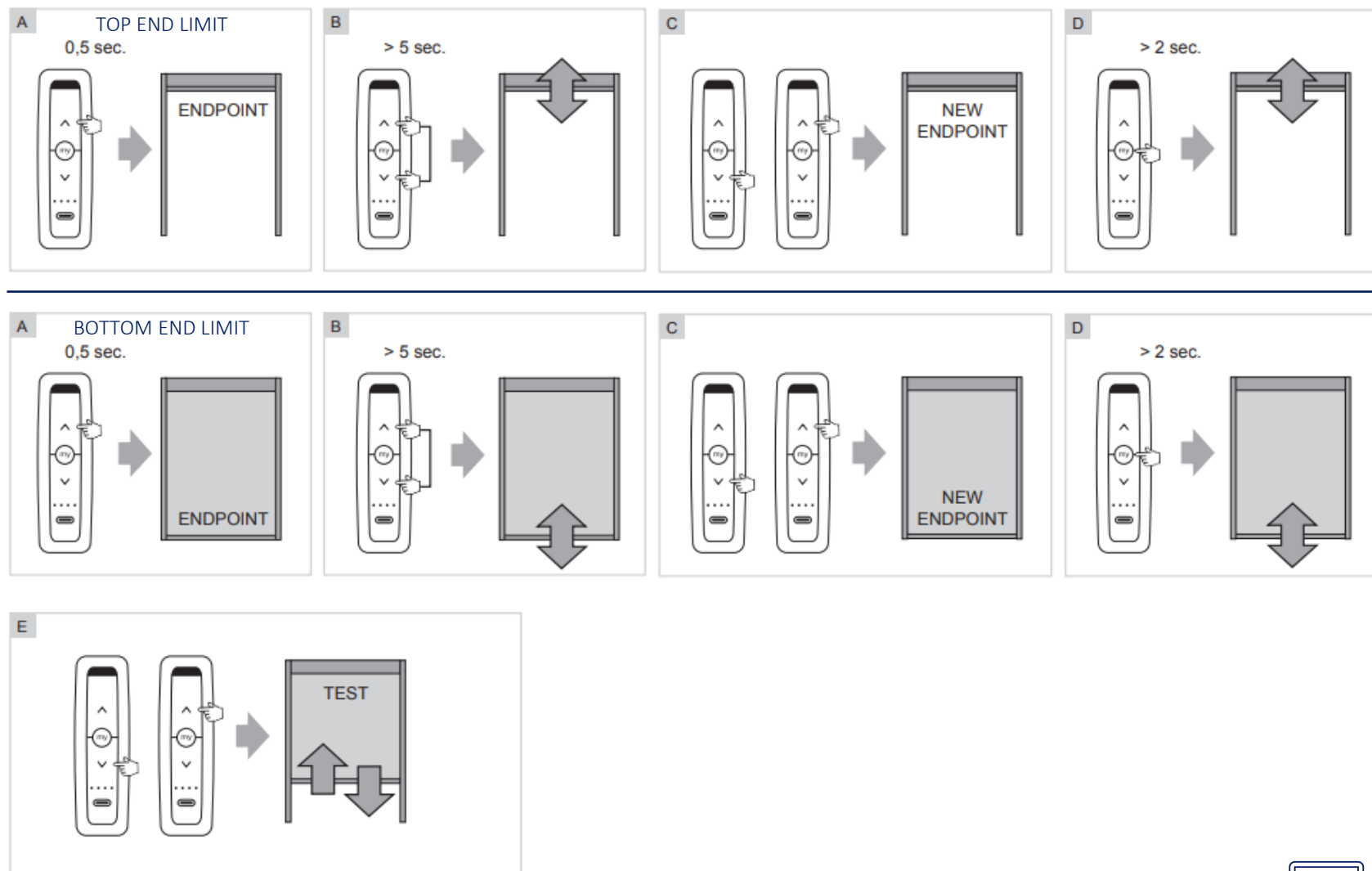
A move your Screen all the way to the end limit you want to change (top or bottom).

B Push and hold the remote's UP and DOWN button simultaneously for about 5 seconds until the Screen will make a short movement.

C Bring your Screen to the new (upper or lower) end limit by pressing the UP- and/or DOWN-button.

D Push and hold the MY-button till the Screen makes a short movement as confirmation.

E Test the new end limit.

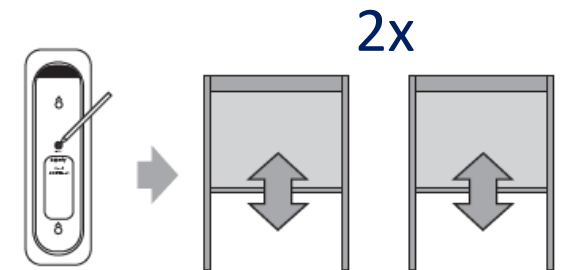


CHANGE END LIMITS / SCREENS



RESET SCREEN MOTOR

- Plug in power to screen if not connected already.
 - Unplug the power for **3 seconds**
 - Plug in power for **8 seconds**
 - Unplug the power for **3 seconds**
 - The screen will start moving on its own as confirmation
 - *IMPORTANT - read whole step:* As soon as the screen stops its movement, PUSH and HOLD the program button on the backside of your remote. While pushing (and holding!) the program button, the screen will make a short up and down movement. **Keep holding** until the screen makes the **SECOND** short up and down movement.
 - Once done, you can let go of the program button.
 - Unplug the power
 - Done
-
- If you want to program the screen now, follow the “programming screens’ instruction



PROGRAMMING LED

- COLOMNO LED
- LINEO LED
- UPDOWN LED

Make sure the control box is powered

A
Open the general LED control box. The LED control box has 4 outlets: S1, S2, S3, S4

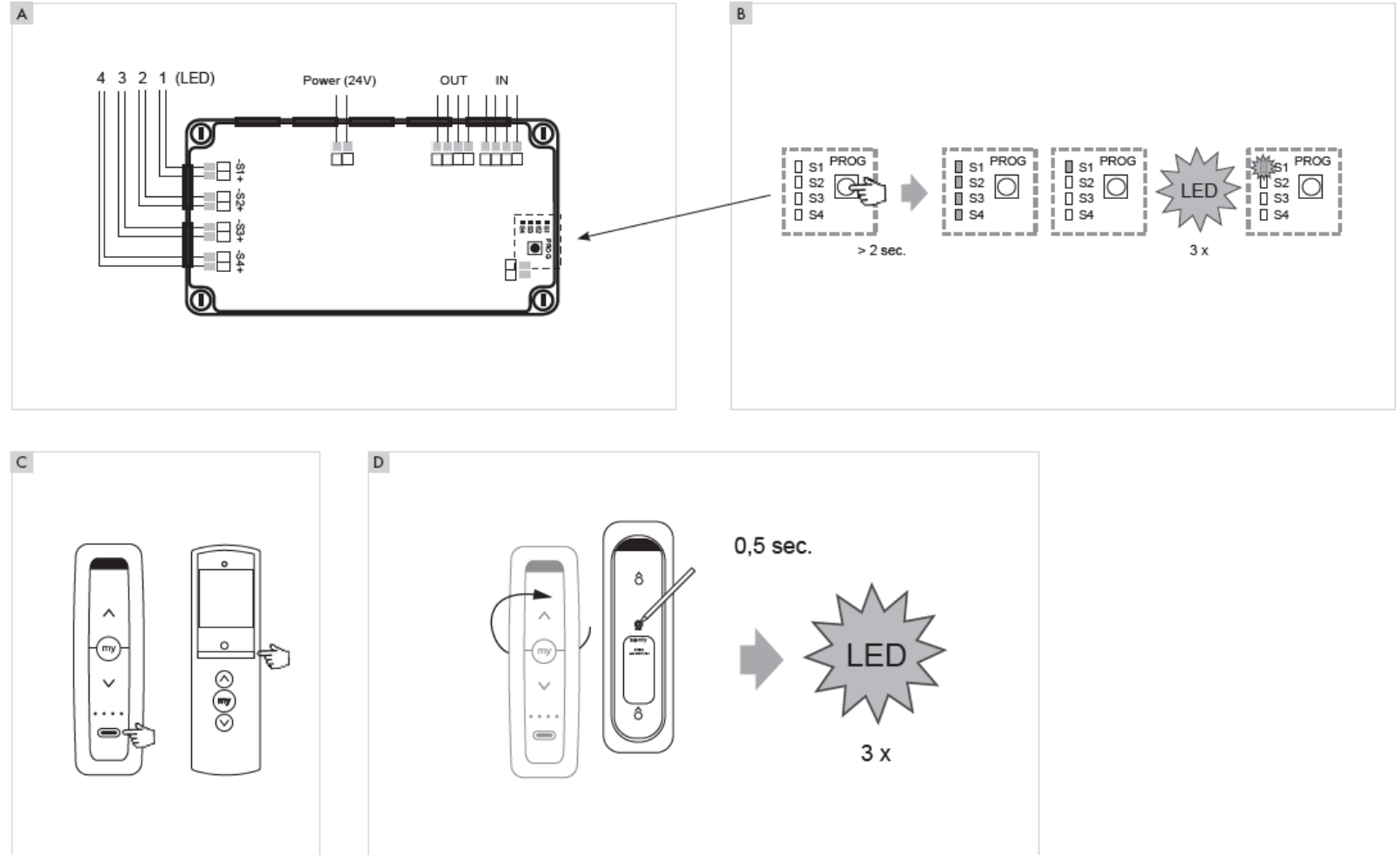
B
Hold the PROG-button on the general control box longer than 2 seconds until S1 is selected. The LED lighting illuminates 3 times and S1 will light up again.

C
Choose the desired channel on the Somfy remote.

D
Press the PROG button (shortly) on the back of the Somfy remote. The LED lighting illuminates 3 times.

Close the general LED control box.

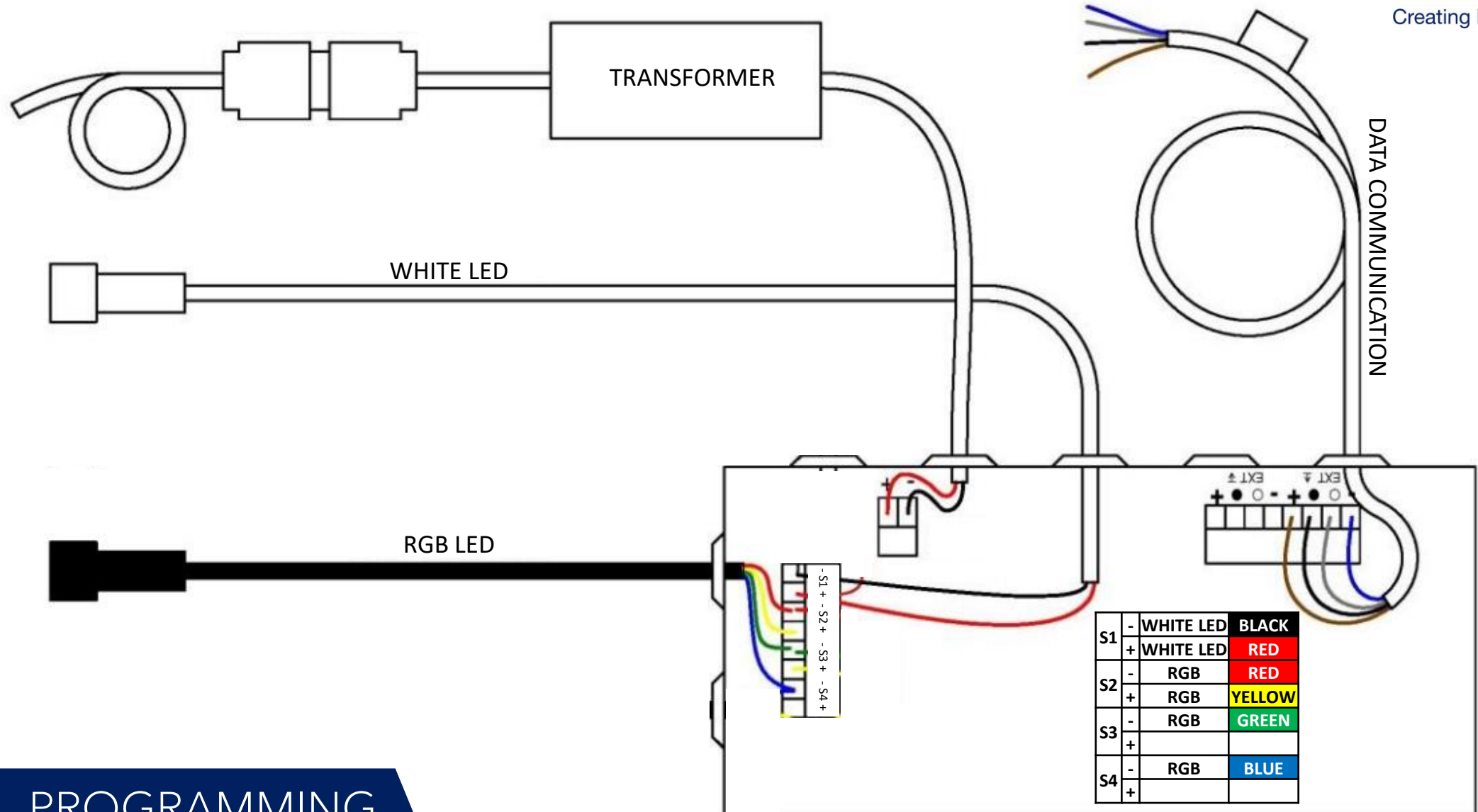
Tip: If multiple LED strips are connected to the control box (S2, S3, S4), you can swap through the outputs by clicking the program button in the box repeatably (when S1 is flashing)



PROGRAMMING
LED



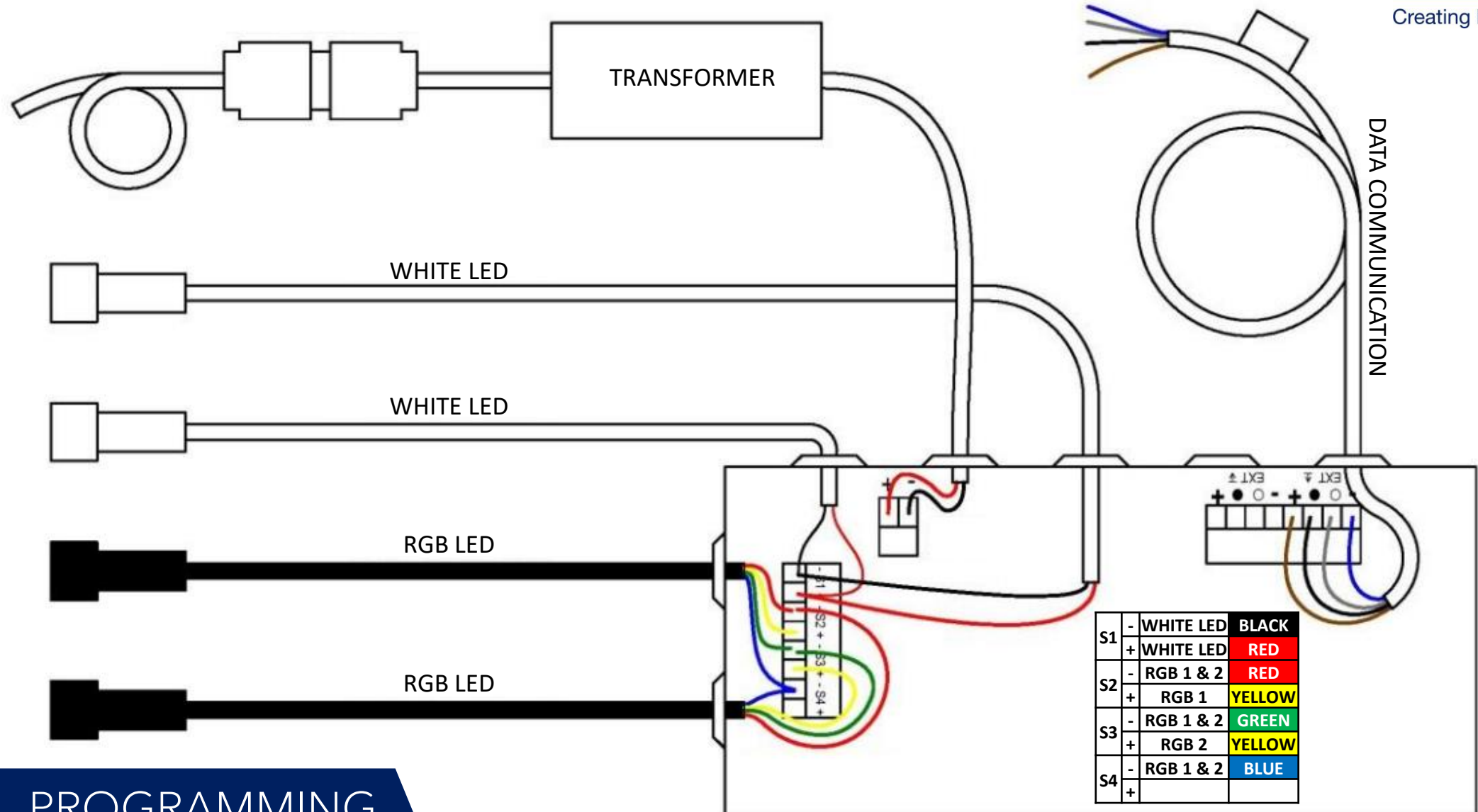
LED UP/DOWN WHITE + RGB WIRING



PROGRAMMING
LED



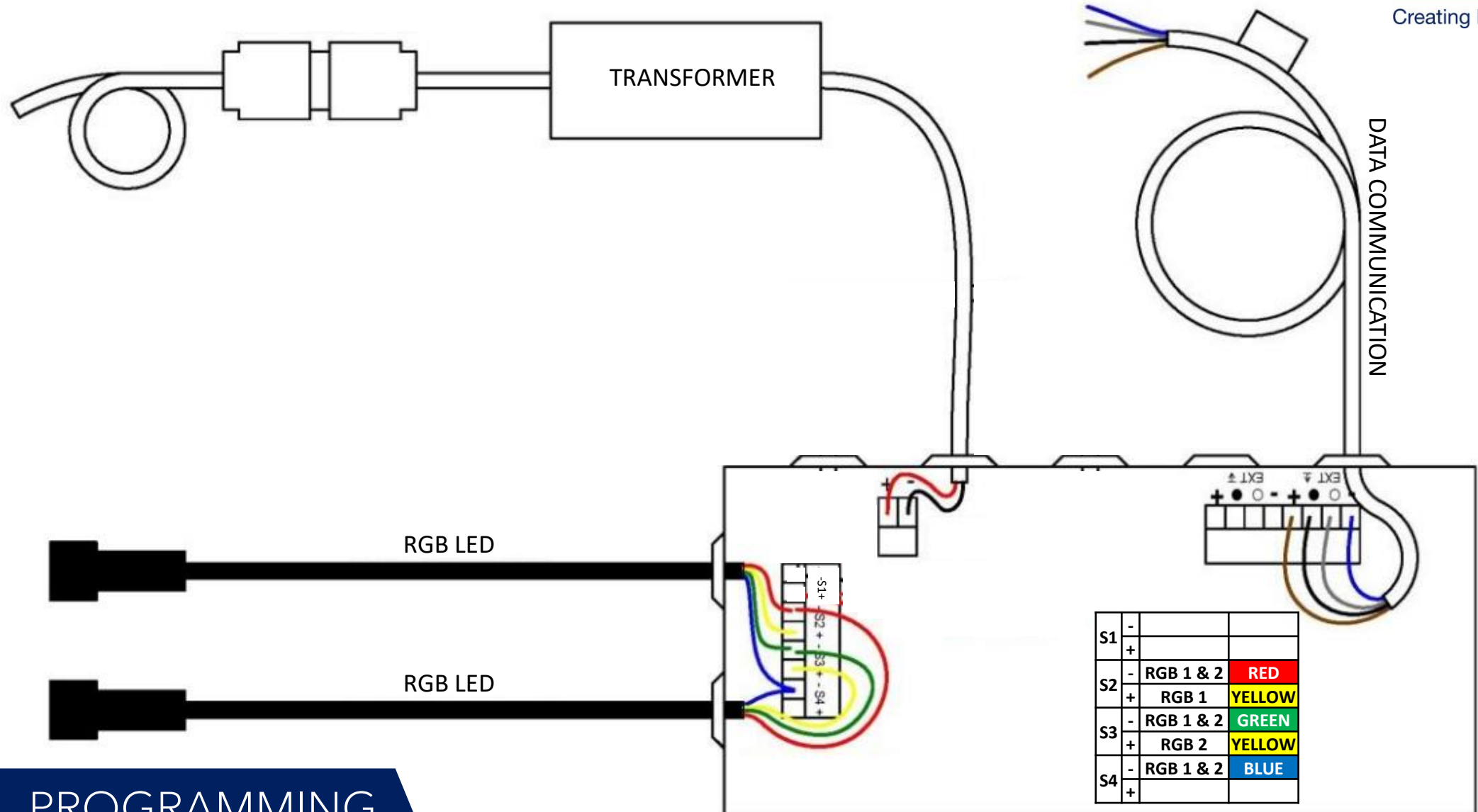
LED UP/DOWN WHITE + RGB WIRING



PROGRAMMING
LED



LED UP/DOWN RGB WIRING



PROGRAMMING
LED



SETTING PARTY MODE LED UP RGB - 1/2

Make sure the control box is powered

The LED control box is set by default for 4 outputs for white LEDs. The following steps will allow you to change the outputs to 1 x white + 1 x RGB.

TIP: You will recognize the right LED control box by the connectors.

A The angled connectors on the LED control box are typical for the LED blades (Lineo® Luce). Round white connectors are only for Colomno LED or UpDown LED white. Round black connectors are only for UP/DOWN LED RGB.

Open the general LED control box. The LED control box has 4 outputs: S1, S2, S3, S4.

B Press the PROG button on the LED control box for more than 2 sec and until the orange LEDs next to S1, S2, S3, S4 illuminate simultaneously. The LED lighting illuminates 3 x and S1 flashes.

C Take the Situo 5- or Telis 16-channel remote by the hand.

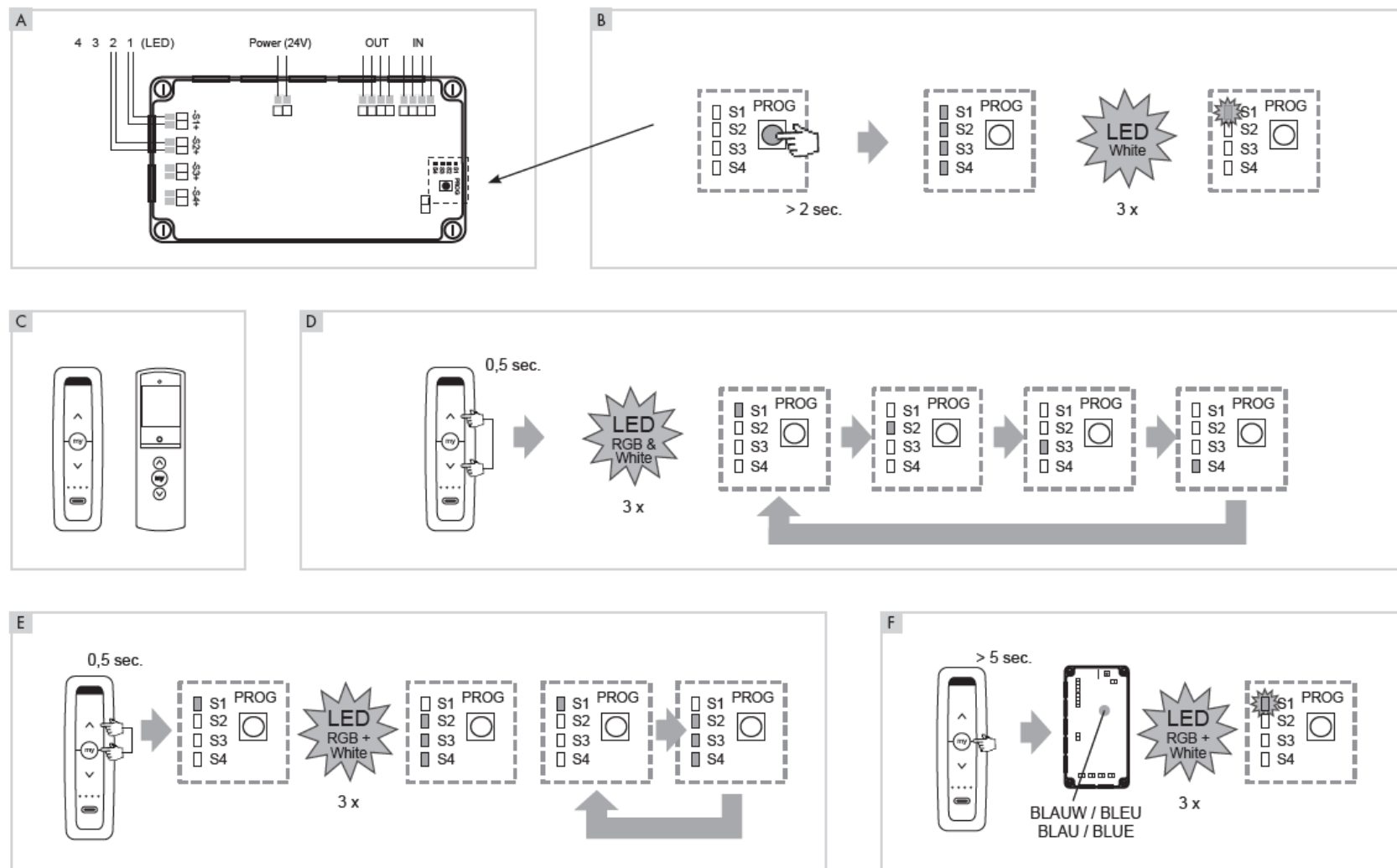
D Press the UP and DOWN buttons on the hand-held remote simultaneously (briefly).

The orange LEDs next to S1, S2, S3, S4 illuminate in succession repeatedly.

Press briefly the UP and MY buttons on the remote simultaneously (to exit the repetition of point **D**).

E The orange LED next to S1 illuminates and the LED lighting illuminates 3 x. Subsequently the orange LEDs next to S2, S3, S4 illuminate simultaneously, then S1 illuminates and then back to S2, S3, S4 simultaneously. This continues repeatedly illuminating.

F Press the MY button on the remote for more than 5 seconds and until the blue LED light on the LED control box illuminates continuously. The LED lighting illuminates 3 x and the orange LED next to S1 flashes. Control box is now set to output 1 x white + 1 x RGB.



PARTY MODE
LED UP RGB



SETTING PARTY MODE LED UP RGB - 2/2

A Select the desired channel on the Situo 5- or Telis 16-channel remote for the white LED. A

B Press briefly on the PROG button on the rear of the hand-held remote. The white LED lighting illuminates 3 x for confirmation. (If you only have single RGB lighting, you may skip step A through C)

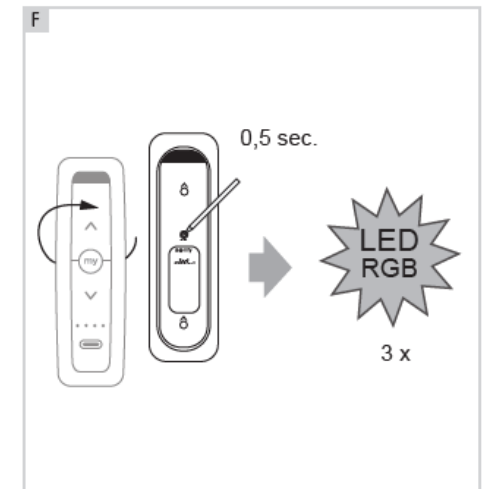
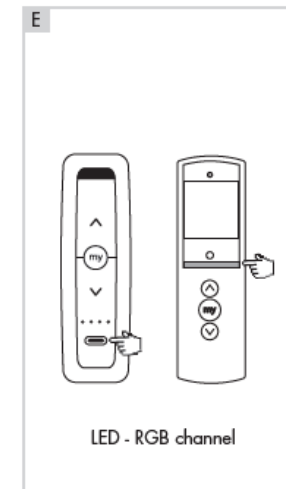
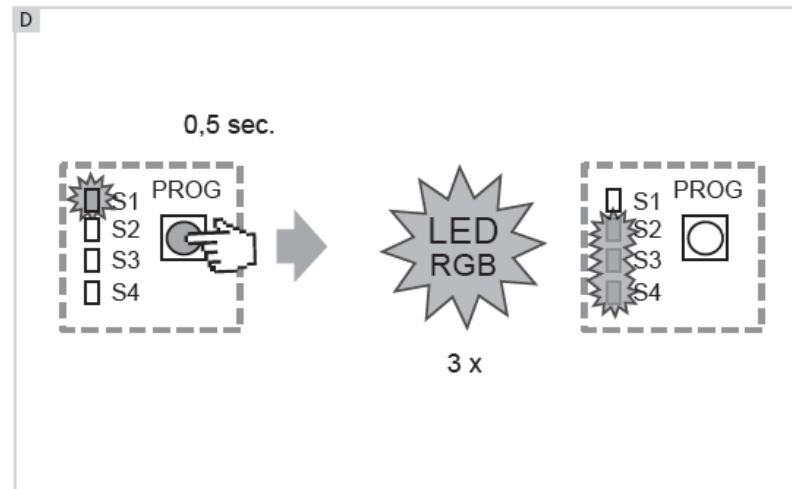
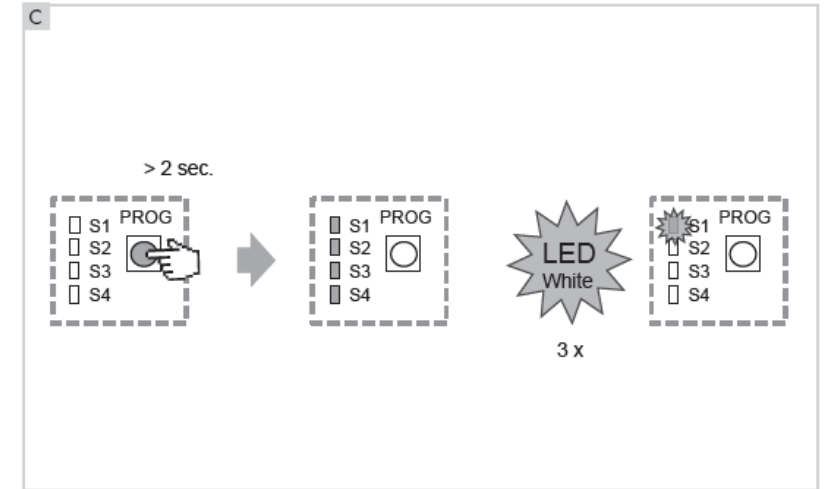
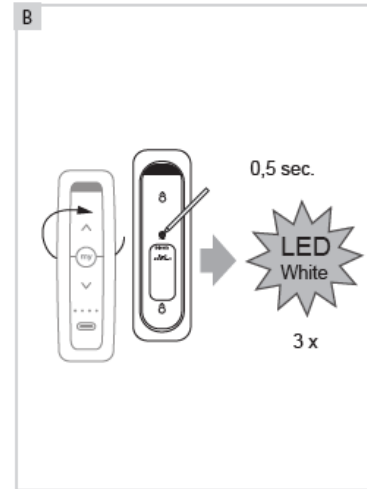
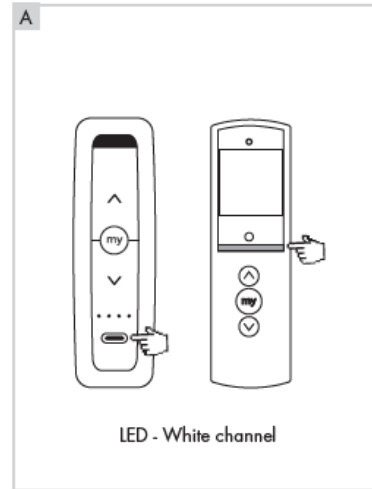
C Press the PROG button on the LED control box (to select RGB channels) for more than 2 seconds and until the orange LEDs next to S1, S2, S3, S4 illuminate simultaneously.

The white LED lighting illuminates 3 x and S1 flashes.

D Press the PROG button on the LED control box briefly. The orange LEDs S2, S3, S4 flash simultaneously and RGB LED lighting illuminate 3 x (red, green, blue).

E Select the desired channel on the Situo 5- or Telis 16-channel remote for the RGB LED.

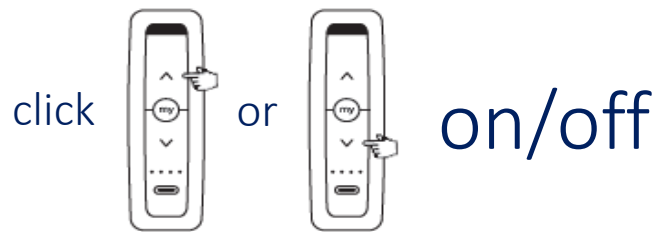
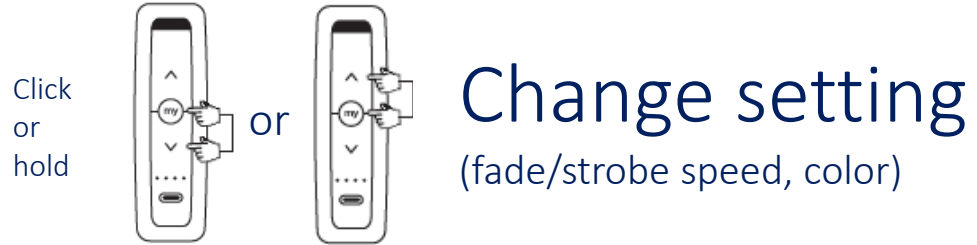
F Press the PROG button on the rear of the hand-held remote briefly. The RGB LED lighting illuminates 3 x (red, green, blue) for confirmation.



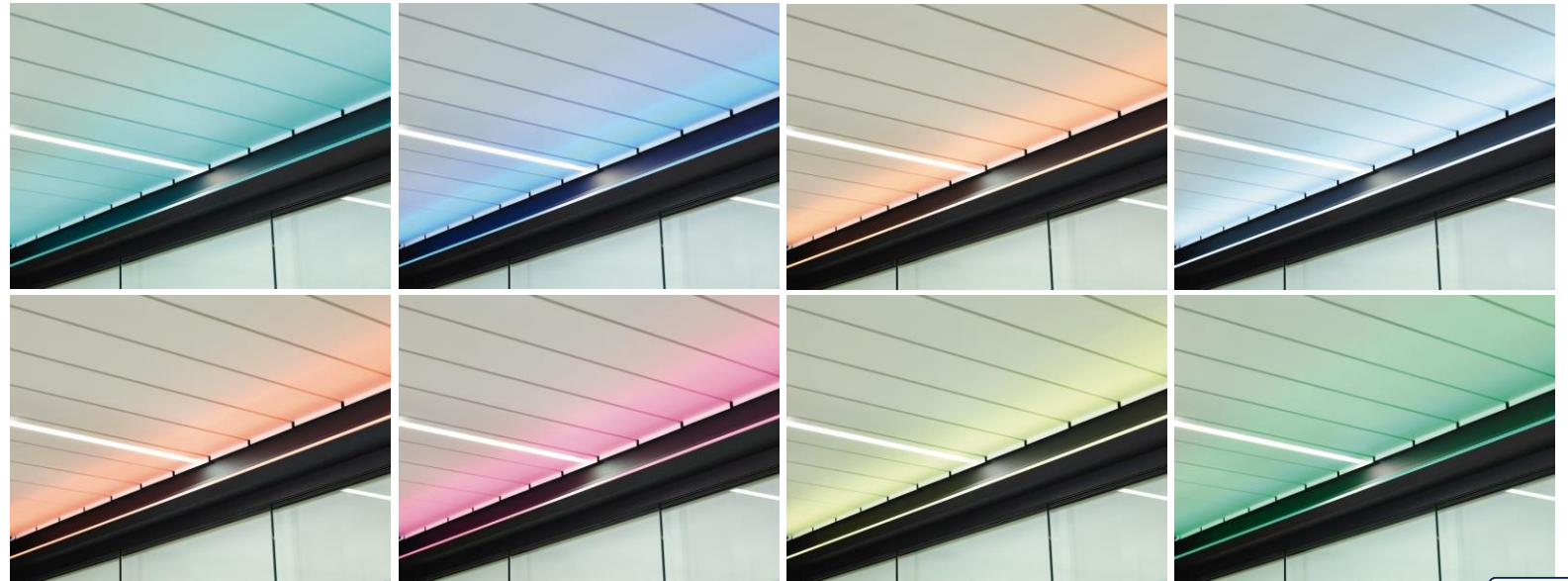
PARTY MODE
LED UP RGB



OPERATION PARTY MODE LED UP RGB

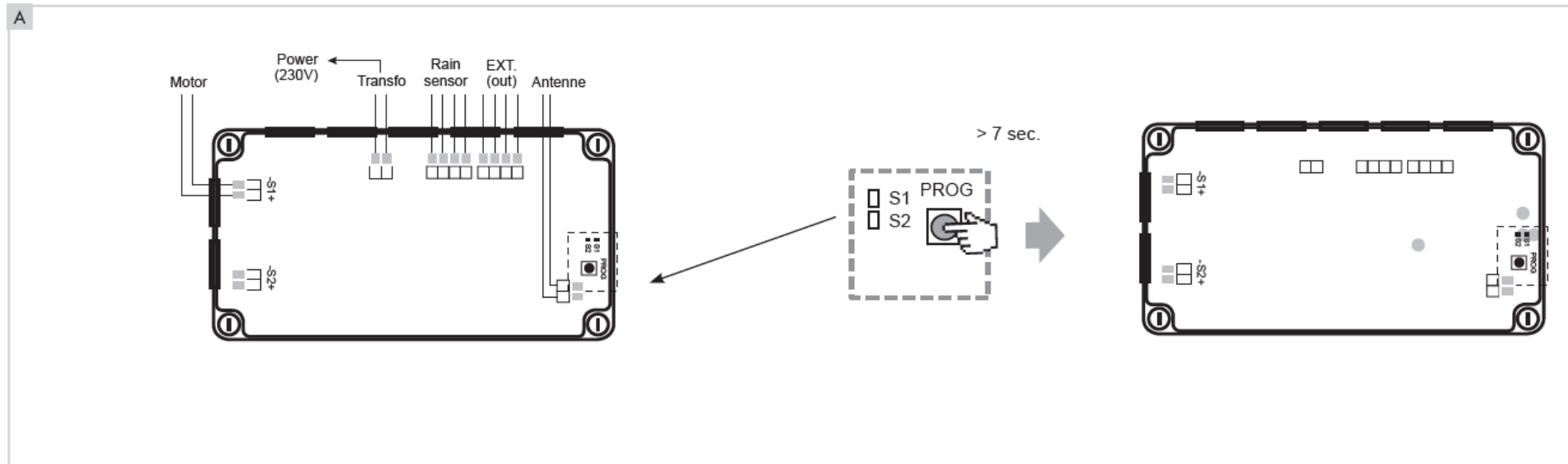


- MODE 1: SINGLE COLOR CONSTANT
- MODE 2: SINGLE COLOR FADE
- MODE 3: SINGLE COLOR STROBE
- MODE 4: MULTI COLOR FADE
- MODE 5: MULTI COLOR STROBE



RESET MOTOR/LED CONTROL BOX

PRESS AND HOLD PROG BUTTON FOR MORE THAN 7 SECONDS UNTIL GREEN, ORANGE AND BLUE LEDs LIGHT UP ON THE CONTROL BOX (→ “CHRISTMAS LIGHTS”)



ACTIVATE SNOW FUNCTION

(when completely installed and programmed)



Creating healthy spaces

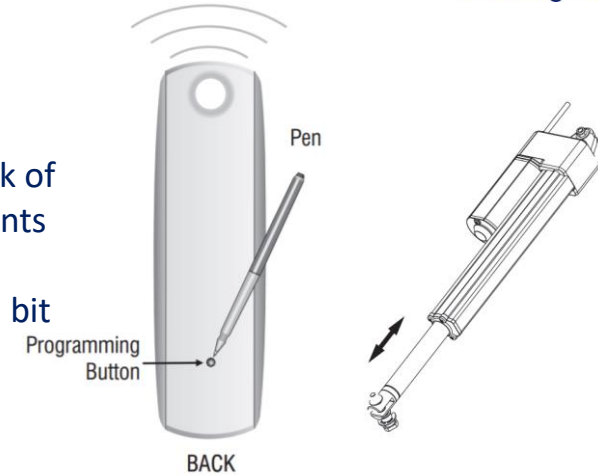
A

Select the channel (on the clients remote → TELIS RTS) where the roof is programmed by pushing the bottom button



B

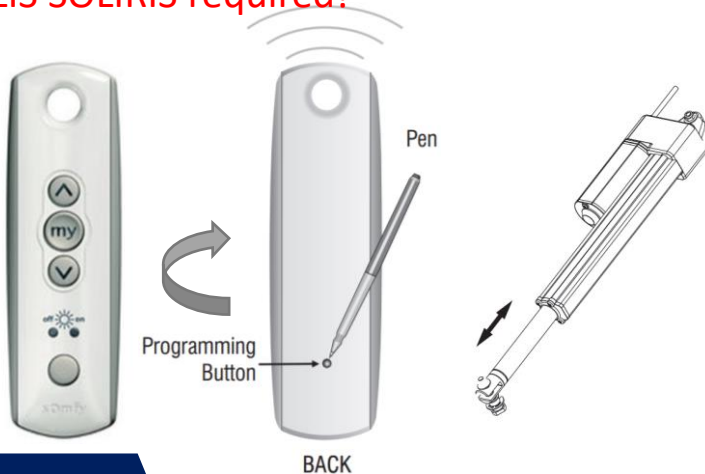
Push the program button on the back of the TELIS RTS (clients remote) until the motor will move a bit up/down



C

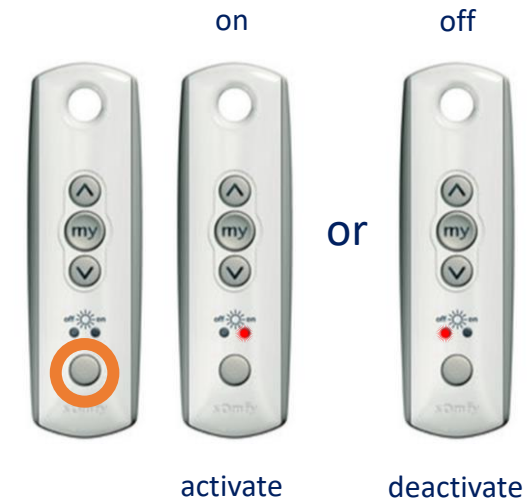
REMOTE SOMFY TELIS SOLIRIS required!

Push the program button on the back of the SOLIRIS RTS (installer remote) until the motor will move a bit up/down



D

Push the bottom button on the front side of the SOLIRIS RTS (installer remote) until 'on' (activate) / 'off' (deactivate) lights up



ACTIVATING SNOW FUNCTION



COPY + PASTE Channel to another Channel

(works also from one remote to another remote)



Creating healthy spaces

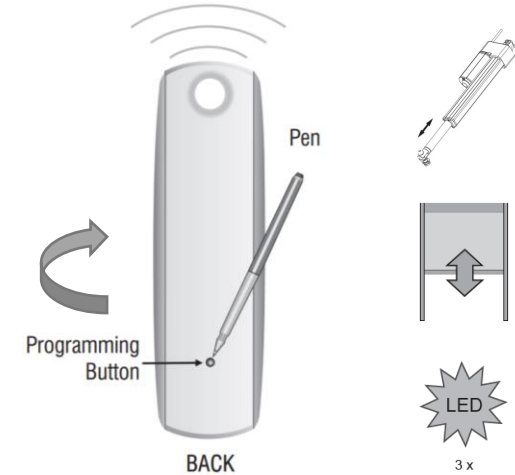
A

Select the channel you want to COPY onto another channel/remote



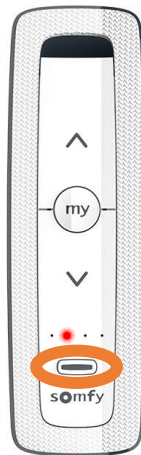
B

Push and hold the program button on the back of the remote until the motor/LED etc. confirms with a movement/flash etc.



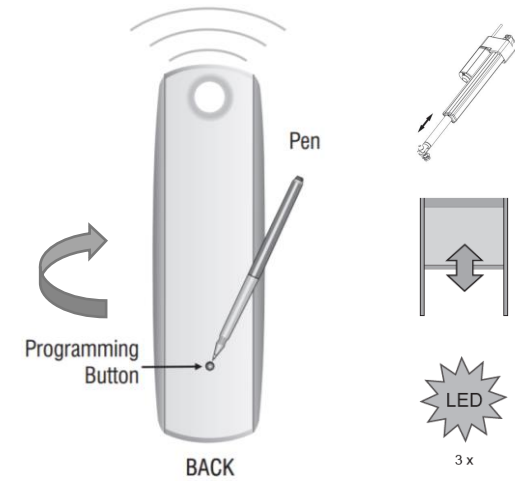
C

Select the new channel (or channel on your other remote) where you want to PASTE



D

Click (0.5s) the program button on the back of the remote until the motor/LED etc. confirms with a movement/flash etc.



(repeating all steps will erase the channel again)



COPY + PASTE CHANNELS

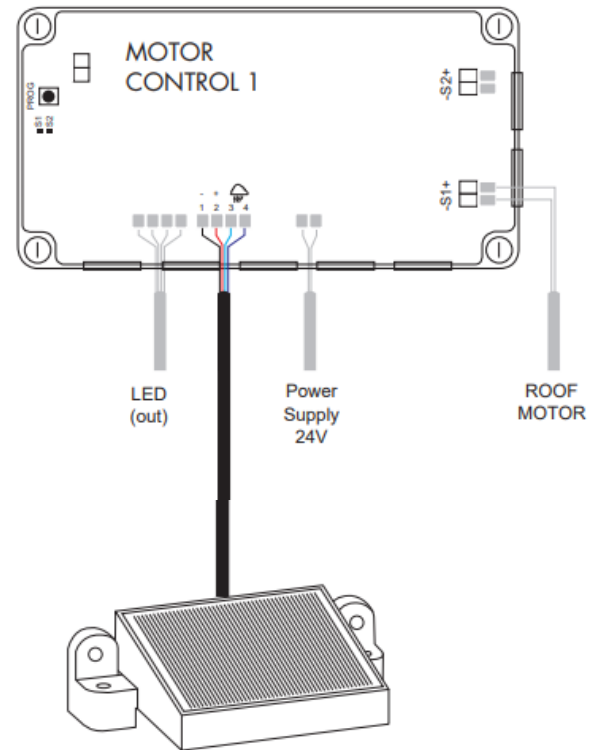


RAIN SENSOR

PLUG & PLAY



Creating healthy spaces

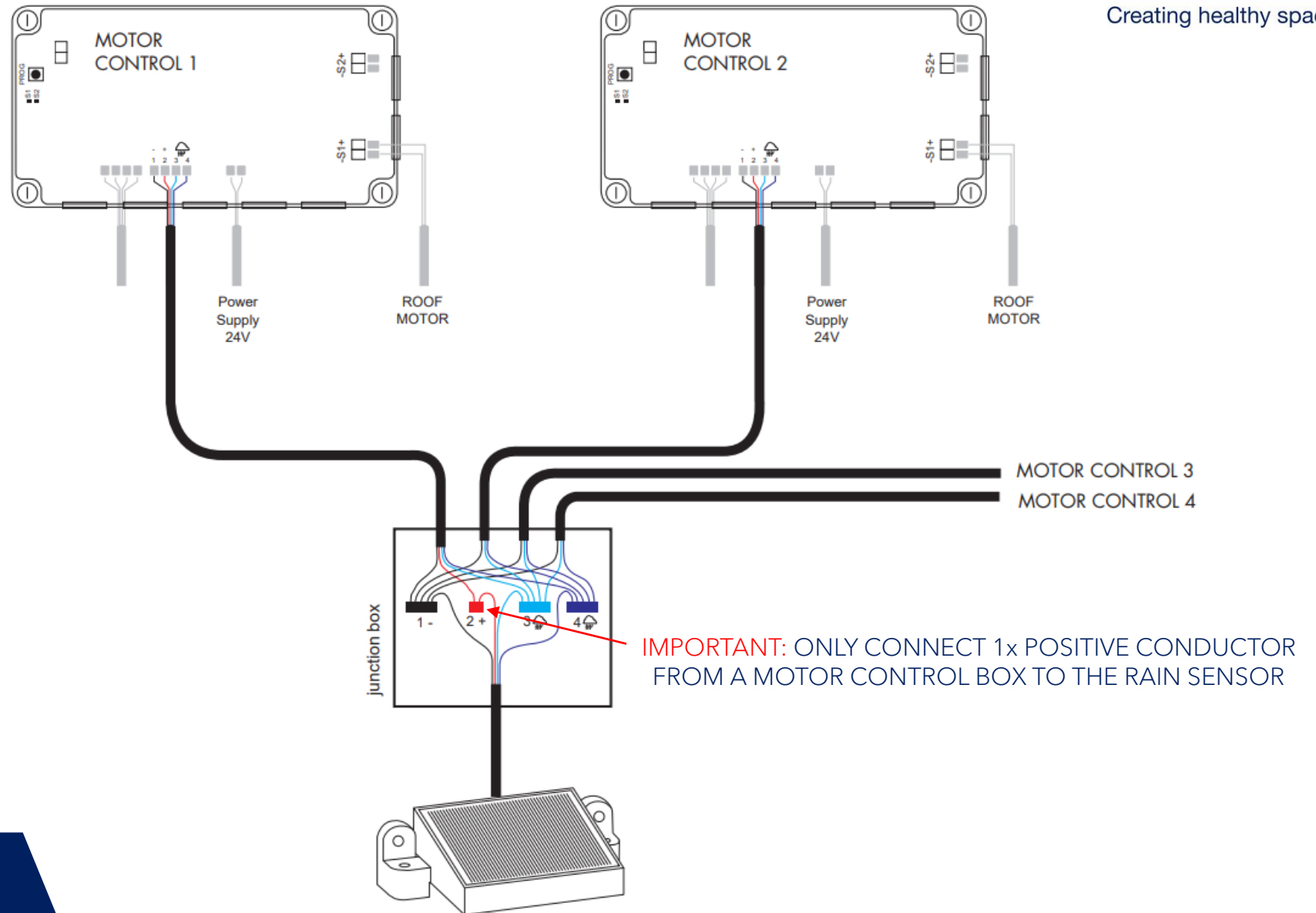


RAIN SENSOR



MULTIPLE UNITS WITH 1 RAIN SENSOR

IT IS POSSIBLE TO SPLICE THE
RAIN SENSOR TO MULTIPLE
MOTOR CONTROL BOXES



WIND SENSOR

A
Position the Somfy Eolis wind sensor in an open place.
The wind sensor can be installed at different angles. Fasten it with 2 screws.

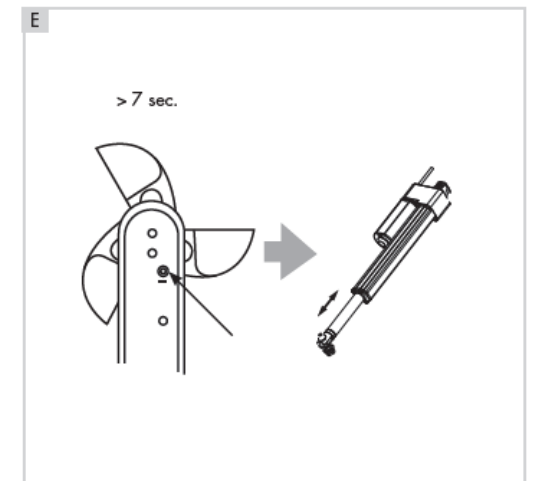
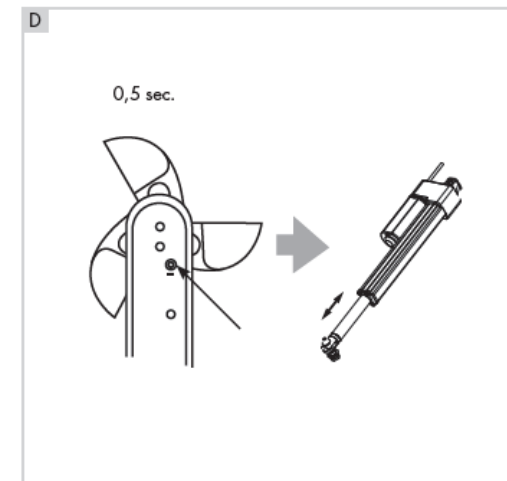
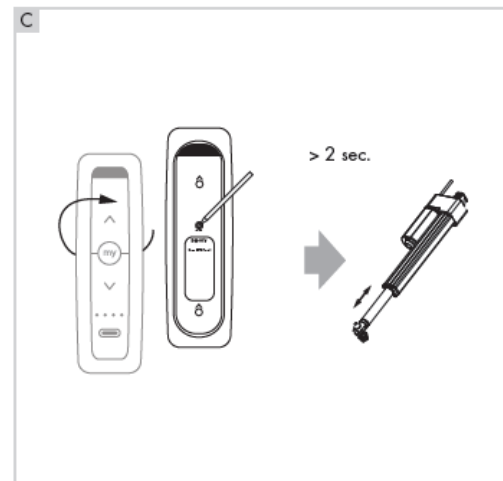
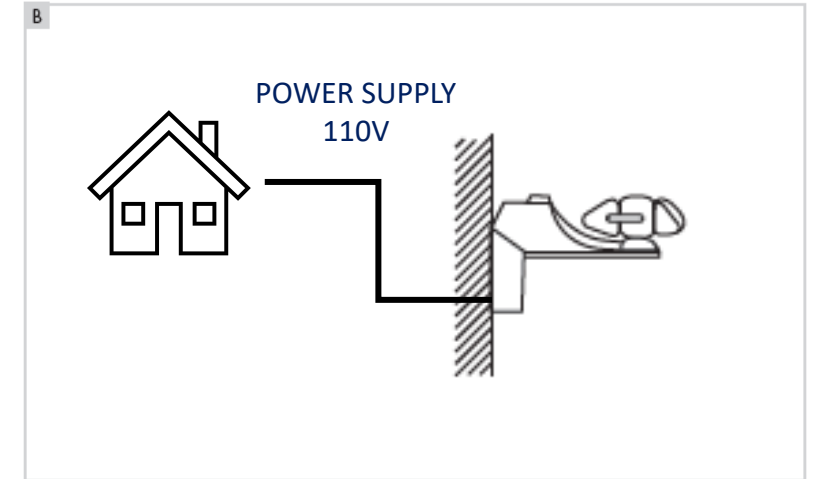
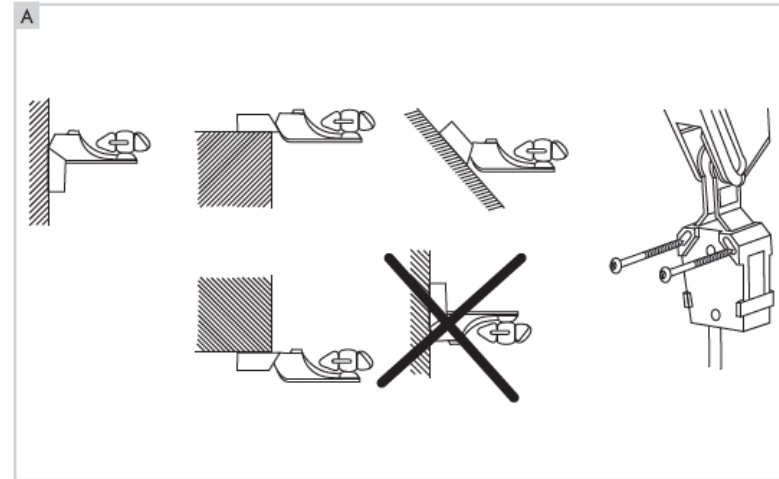
B
Provide a 110 V power supply.

C
The wind sensor must be programmed onto your pergolas roof channel and/or screen channels:

Chose on your programmed remote the channel you programmed the roof/screen on. Push and hold the backside program button for 2 seconds until the roof confirms with a short movement.

D
Press briefly on the 'program' button of the Eolis wind sensor. The motor makes a short movement for confirmation. The wind sensor is programmed.

E
Returning to the default settings for the wind sensor
Press more than 7 seconds on the 'program' button of the Eolis wind sensor, until the drive makes a short outward and inward movement.

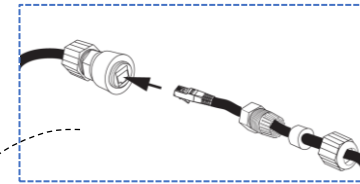




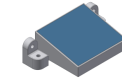
ETHERNET CABLE CONNECTION – CAT 5/6 with RJ45 plug (provided by client)

POWER SUPPLY 110V (provided by client)

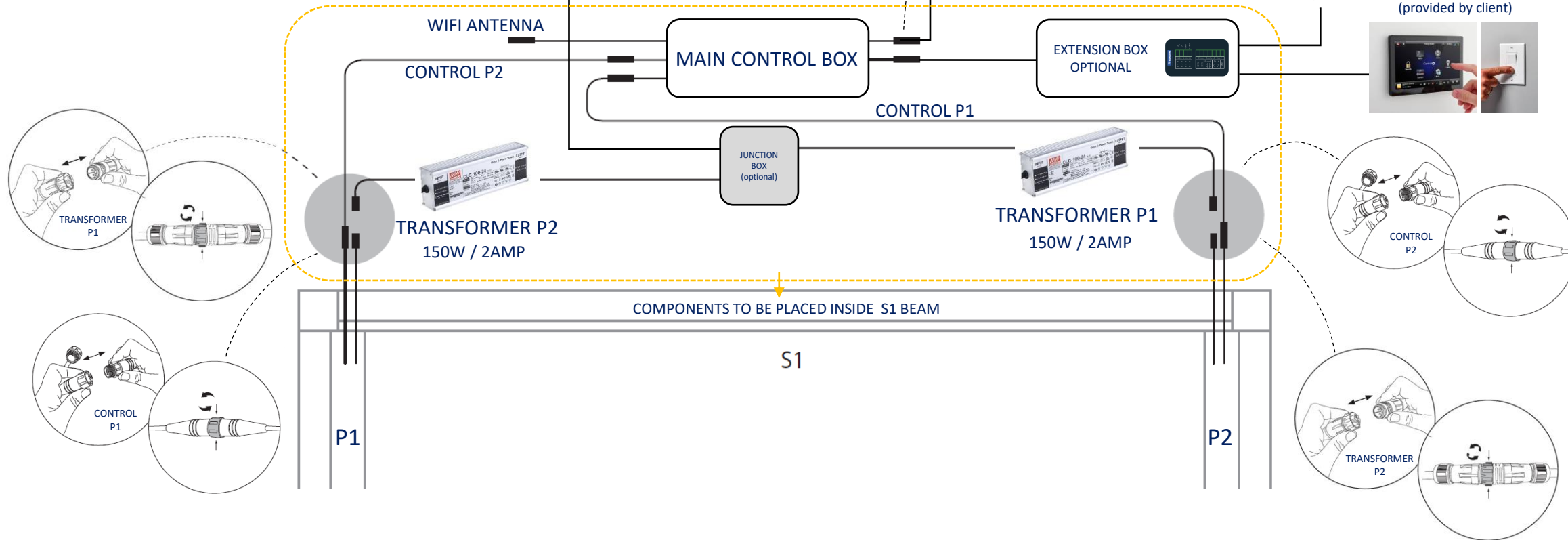
ETHERNET CABLE CONNECTION



RAIN SENSOR OPTIONAL



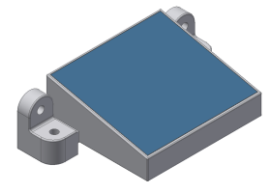
HARD-WIRED CONTROL
(provided by client)



SKYE
WIRING



RAIN SENSOR
OPTIONAL



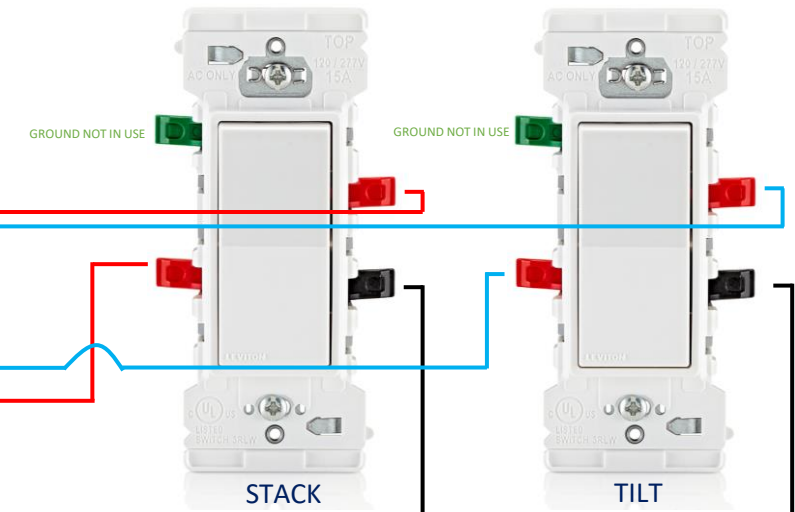
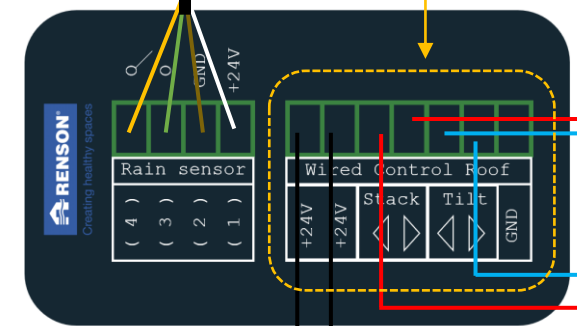
HARD-WIRED CONTROL
(provided by client)



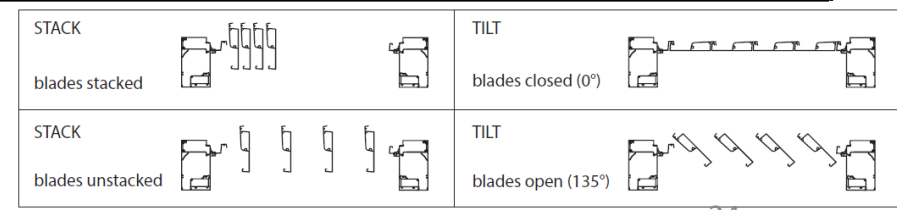
GENERIC WIRING EXAMPLE
WITH TWO 3-WAY TOGGLE SWITCHES

To MAIN CONTROL BOX

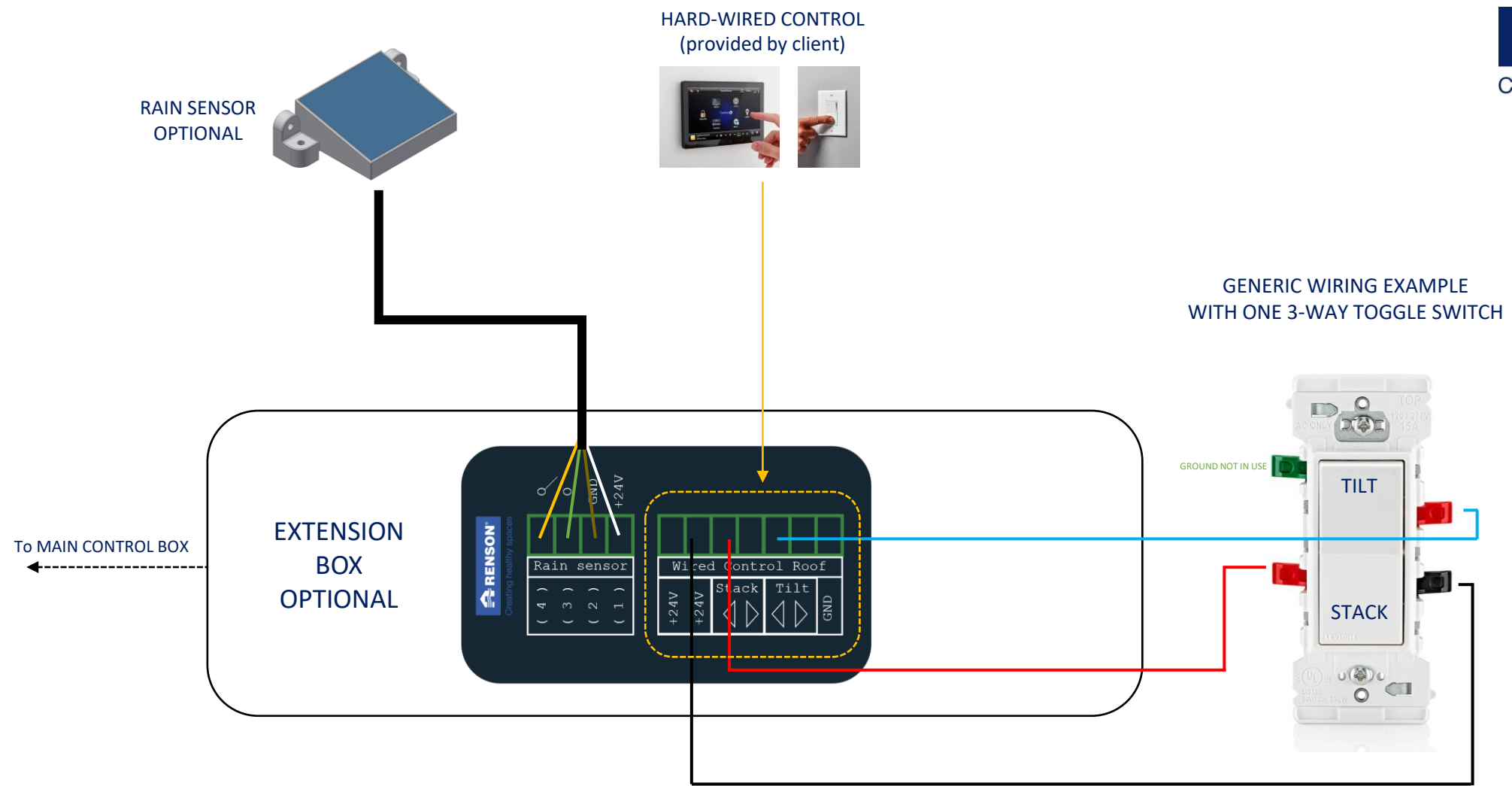
EXTENSION
BOX
OPTIONAL



MOVEMENTS: STACK
UNSTACK
TILT UP
TILT DOWN



SKYE WIRING
EXTENSION BOX



MOVEMENTS: STACK
TILT DOWN



SKYE WIRING
EXTENSION BOX



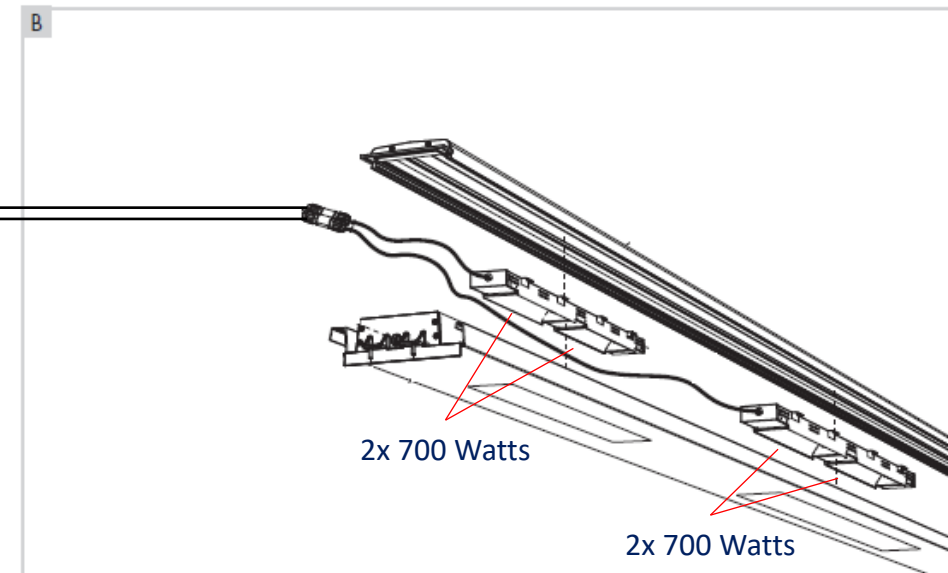
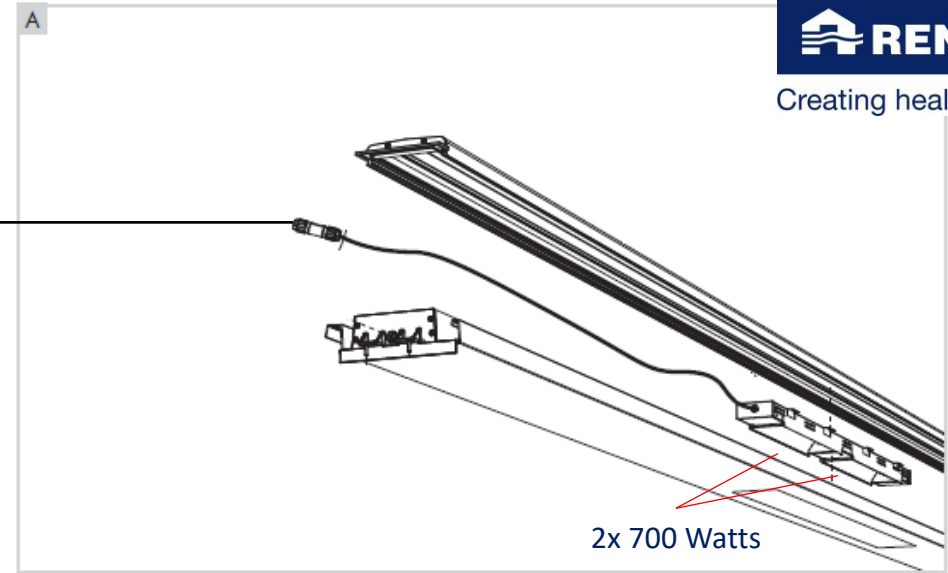
POWER SUPPLY **230V** (provided by client)

Switch
provided by
client



POWER SUPPLY **230V** (provided by client)

Switch
provided by
client

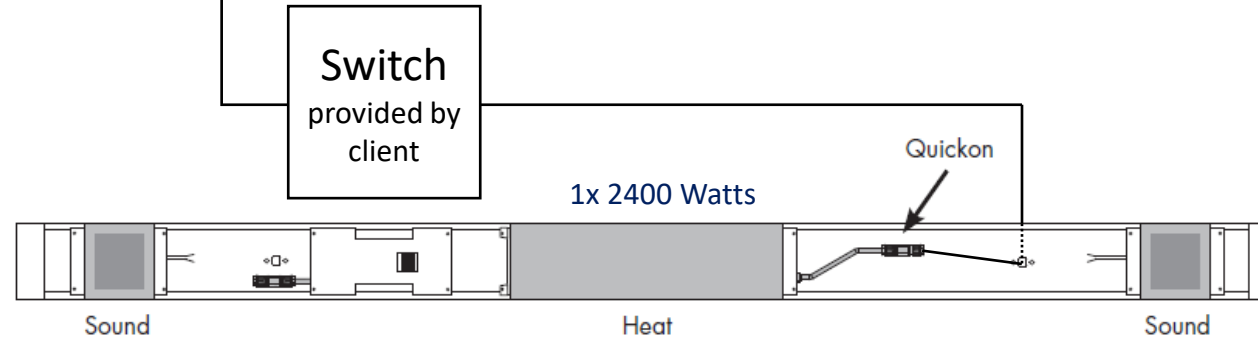


LINEO FIX WITH
HEAT WIRING





POWER SUPPLY **230V** (provided by client)



POWER SUPPLY **230V** (provided by client)

